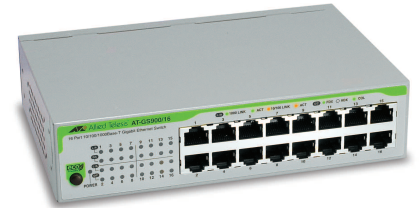


AT-GS900/16

Unmanaged Gigabit Ethernet Switches



AT-GS900/16

16 port 10/100/1000T unmanaged switch

ECO-Friendly

The AT-GS900/16 eco-friendly switch conforms with Allied Telesis' commitment to environmentally friendly processes and products. It is designed to minimize power consumption through the use of a high efficiency power supply and a low power chipset.

With a low 5.8W typical power consumption and a reduction in power during after-work hours (overnight mode) – as well as other power saving features included as standard, the Allied Telesis AT-GS900/16 truly lives up to it's name as an 'eco-friendly' switch.

Not only does this help the planet by reducing the carbon footprint of each switch, it also lowers the Total Cost of Ownership (TCO) to the user, as the product costs less to run, and has improved reliability.

With all these power saving features, the new eco-friendly AT-GS900/16 saves the user up to 20% in power consumption over our previous version.

High Performance

Designed for medium enterprises and educational networks, the Allied Telesis GS900 series of unmanaged Gigabit switches delivers the high-speed and high performance demanded by today's high-bandwidth applications such as video, graphics, and industrial design.

Flexibility

Available in 8, 16 and 24 port models, Allied Telesis lets you decide which size is best for your network. Reduces your cost by allowing you to only pay for the ports you need.

Simplified Installation

The GS900 series switches require minimal configuration and can be installed in minutes for use in network racks or on desktops. The 10/100/1000T copper ports on the GS900 series are fully auto-negotiating, allowing the switches to connect to all other 10Mbps Ethernet, 100Mbps Fast Ethernet, or 1000Mbps Gigabit Ethernet devices. Equipped with MDI/MDI-X ports for easy connection to other hubs and switches, the GS900 series offers a natural migration path from legacy networks and a cost-effective introduction to Gigabit Ethernet. Finally, easy to read front panel LEDs show ongoing switch status and simplify troubleshooting.

Quality and Reliability

Allied Telesis is a worldwide leader in unmanaged Ethernet switches. Shipping more than 250,000 unmanaged switches every year, Allied Telesis offers proven reliability and industry recognized quality.

** 9 ports, 100% utilization, 3m cable*

Key Features

- Eco-button to turn off LED's and save power
- Power saving port features on each port including:
 - Cable length detection and power minimization
 - Link-down power savings
- Lower power on short cable runs
- Support for jumbo frames up to 9216 bytes
- Wirespeed performance
- Non-blocking architecture
- Auto-negotiation Gigabit ports
- Auto MDI/MDI-X on TX ports
- Transparent to VLAN packets
- Full-duplex flow control
- Sturdy metal case
- Silent operation, fanless



AT-GS900/16 | Unmanaged Gigabit Ethernet Switches

Performance

14,880pps for 10Mbps Ethernet
148,800pps for 100Mbps Ethernet
1,488,000pps for 1000Mbps Ethernet

Switching capacity 32Gbps
Throughput 23.8Mpps
Switch fabric 1.6Gbps
MAC address Up to 8K

Packet buffer: 128KB
Default aging time 300 seconds

Jumbo frames 9216bytes
VLAN Packets Transparent
EAPOL passthrough Yes
BDPU passthrough Yes

Half/full-duplex
Auto-negotiation
MDI/MDI-X

Interface Connections

10/100/1000T RJ-45

Power Characteristics

Voltage 100-240V AC
Frequency 50/60Hz
Current 1.0A
Power consumption max 10W

Environmental Specifications

Operating temp. 0°C to 40°C (32°F to 104°F)
Non-operating temp. -25°C to 70°C (-13°F to 158°F)
Operating humidity 5% to 90% non-condensing
Storage humidity 5% to 95% non-condensing

Technical Specifications

Physical Characteristics

Dimensions 18.4cm x 12.1cm x 4.4cm
(W x D x H) (7.2" x 4.8" x 1.7")

Weight .95kg (2.1lbs)

Wall-mount or Desktop

All units come with wall and 19" rack-mount brackets

Standards and Compliance

IEEE 802.3 10T Ethernet
IEEE 802.3u 100TX Fast Ethernet
IEEE 802.3ab 1000T Gigabit Ethernet
IEEE 802.3z Full-duplex
IEEE 802.3x Flow control

Electrical/Mechanical Approvals

UL 1950
FCC/EN55022 Class A
VCCI Class A
C-Tick
EN60950 (TUV)
EN55024
CE

Ordering Information

AT-GS900/16

16 port 10/100/1000T unmanaged switch

Where xx = 10 for U.S. power cord
20 for no power cord
30 for U.K. power cord
40 for Australian power cord
50 for European power cord

USA Headquarters | 19800 North Creek Parkway | Suite 100 | Bothell | WA 98011 | USA | T: +1 800 424 4284 | F: +1 425 481 3895

European Headquarters | Via Motta 24 | 6830 Chiasso | Switzerland | T: +41 91 69769.00 | F: +41 91 69769.11

Asia-Pacific Headquarters | 11 Tai Seng Link | Singapore | 534182 | T: +65 6383 3832 | F: +65 6383 3830

www.alliedtelesis.com

© 2010 Allied Telesis Inc. All rights reserved. Information in this document is subject to change without notice. All company names, logos, and product designs that are trademarks or registered trademarks are the property of their respective owners. 617-000377 Rev. B